

**GEOTEK<sup>®</sup>**  
Healthcare Products

## ABOUT US / HAKKIMIZDA

**G**eotek is a manufacturer company of interventional medical devices, dedicated to continuous improvement of the performance and quality of its service and products.

Our aim is expanding our distribution around the world with new and improved products and we commit to take care of the customer's needs with manufacturing high quality medical device.

Milestones of the company

**2003** was founded in Ankara, Turkey. Started with representations of well-known international medical companies and maintained a sub-dealers sales and marketing network all around Turkey in a short period

**2009** opened production facility and got CE certification

**2012** launched first Automatic Biopsy Needle

**2017** got FDA 510k approval for Disposable Needle Guides

**2020** New Reusable Gun Series Launched

**2021** USA Branch Office Opened

**2022** New Factory in Operation

**G**eotek sürekli kalite ve performans gelişimi ile dünya sağlık sektörüne tıbbi malzeme üretmektedir. Amacımız, dünya genelinde dağıtım ağıımızı, en yüksek kalitede geliştirilmiş ürünler ile geliştirerek, kullanıcıların beklentilerini karşılamaktır.

*Geotek'in Kilometre Taşları;*

*2003 yılında kurulmuş, önceleri çok iyi bilinen markaların ithalatı ile başlamış, kısa sürede yurt içinde geniş bayii ağına ulaşmıştır*

*2009 yılında üretim bazlı fabrika kurmuş ve CE kalite belgesi almıştır*

*2012 yılında kendi adıyla ilk Otomatik Biyopsi İğnesi satışa sunulmuştur*

*2017 yılında Tek Kullanımlık İğne Kılavuzu için FDA onayı almıştır*

*2020 yılında Yeni Reusable Biyopsi Tabanca Serileri satışa sunulmuştur*

*2021 yılında ABD ofisi açılmıştır*

*2022 Yeni fabrika hizmete girmiştir*



**GEOTEK**<sup>®</sup>  
Healthcare Products

# CONTENTS / İÇİNDEKİLER

## BIOPSY NEEDLES / BİYOPSİ İĞNELERİ

Estacore® Automatic Biopsy Needle / <i>Estacore Otomatik Biyopsi İğnesi</i> .....	4
Estacore Pro® Automatic Biopsy Needle / <i>Estacore Pro Otomatik Biyopsi İğnesi</i> .....	5
Katracore® Automatic Biopsy Needle / <i>Katracore® Otomatik Biyopsi İğnesi</i> .....	6
Vescut® Automatic Biopsy Needle / <i>Vescut® Otomatik Biyopsi İğnesi</i> .....	7
Maxicore® Reusable Biopsy Gun / <i>Maxicore® Reusable Biyopsi Tabancası</i> .....	8
Maxicore® Reusable Biopsy Gun Needle / <i>Maxicore® Reusable Biyopsi Tabanca İğnesi</i> .....	9
Maxicore-M® Reusable Biopsy Gun / <i>Maxicore-M® Reusable Biyopsi Tabanca</i> .....	10
Maxicore-M® Reusable Biopsy Gun Needle / <i>Maxicore-M® Reusable Biyopsi Tabanca İğnesi</i> .....	11
Maxicore-U® Reusable Biopsy Gun / <i>Maxicore-U® Reusable Biyopsi Tabanca</i> .....	12
Maxicore-U® Reusable Biopsy Gun Needle / <i>Maxicore-U® Reusable Biyopsi Tabanca İğnesi</i> .....	13
Semi-Automatic Biopsy Needle / <i>Yarı Otomatik Biyopsi İğnesi</i> .....	14
Tumor Marking Needle / <i>Tümör İşaretleme İğnesi</i> .....	15
Breast Localization Needle / <i>Meme İşaretleme İğnesi</i> .....	16
Percutaneous Access Needle / <i>Perkütan Giriş İğnesi</i> .....	17
Double Lumen Oocyte Aspiration Needle / <i>Çift Lümenli Yumurta Toplama İğnesi</i> .....	18
Single Lumen Oocyte Aspiration Needle / <i>Tek Lümen Yumurta Toplama İğnesi</i> .....	19
Bone Marrow Aspiration Needle / <i>Kemik İliği Aspirasyon İğnesi</i> .....	20
Bone Marrow Biopsy Needle / <i>Kemik İliği Biyopsi İğnesi</i> .....	21
Coaxial Needle / <i>Koaksiyel İğnesi</i> .....	22
Chiba Biopsy Needle / <i>Chiba Biyopsi İğnesi</i> .....	23
Disposable Needle Guides / <i>Tek Kullanımlık Biyopsi İğne Kılavuzu</i> .....	24
Transperineal Biopsy Needle Guide / <i>Tek Kullanımlık Transperineal İğne Kılavuzu</i> .....	25
Transperineal Biopsy Needle Guide / <i>Tek Kullanımlık Transperineal İğne Kılavuzu</i> .....	26
Trus Biopsy Kit / <i>Trus Biyopsi Kit</i> .....	27

# BIOPSY NEEDLES

*BIYOPSI İĞNELERİ*



# ESTACORE® AUTOMATIC BIOPSY NEEDLE

## ESTACORE® OTOMATİK BIYOPSİ İĞNESİ

- ↳ Easy and one hand operated with two stage arming
- ↳ Echogenic and atraumatic needle tip design
- ↳ 22mm advancement with 17mm notch
- ↳ Ergonomic and light weight design
- ↳ Depth marked canula
- ↳ Choice of two triggers
- ↳ Coaxial needles are optionally available



Ref. No	Diameter (G)	Length (cm)	Coaxial Needle Length (cm)	With Coaxial Ref. No
GEC1410	14	10	5,5	GEC1410-X
GEC1415	14	15	10,5	GEC1415-X
GEC1420	14	20	15,5	GEC1420-X
GEC1610	16	10	5,5	GEC1610-X
GEC1615	16	15	10,5	GEC1615-X
GEC1620	16	20	15,5	GEC1620-X
GEC1810	18	10	5,5	GEC1810-X
GEC1815	18	15	10,5	GEC1815-X
GEC1820	18	20	15,5	GEC1820-X
GEC1825	18	25		
GEC1830	18	30		
GEC2010	20	10	5,5	GEC2010-X
GEC2015	20	15	10,5	GEC2015-X
GEC2020	20	20	15,5	GEC2020-X



- ↳ İki aşamalı kurma sistemi sayesinde kolay ve tek elle kurulma
- ↳ Ekojenik ve atravmatik uç yapısı
- ↳ 22mm doku içine gömülme mesafesi ve 17mm örnek alma haznesi
- ↳ Ergonomik ve hafif sap dizaynı
- ↳ Derinlik işaretli kanül
- ↳ Koaksiyel iğneler isteğe bağlı sağlanabilir

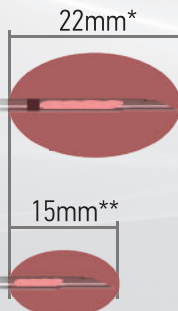
# ESTACORE PRO® AUTOMATIC BIOPSY NEEDLE

## ESTACORE PRO® OTOMATİK BİYOPSİ İĞNESİ

- ↳ Easy and one hand operated with two stage arming
- ↳ Echogenic and atraumatic needle tip design
- ↳ **22mm\* (17mm notch) or 15mm\*\* (10mm notch) penetration depth**
- ↳ Ergonomic and light weight design
- ↳ Depth marked canula
- ↳ Choice of two triggers (top&back side)
- ↳ Coaxial needles are optionally available
- ↳ **Color code**



Ref. No 22mm**	Ref. No 15mm**	Diameter (G)	Length (cm)	Coaxial Needle Length (cm) 22mm / 15mm	With Coaxial Ref. No: 22mm	With Coaxial Ref. No: 15mm
GEP1409	-	14	09	4,5 / 4	GEP1409-X	-
GEP1410	-	14	10	5,5 / 5	GEP1410-X	-
GEP1412	-	14	12	7,5 / 7	GEP1412-X	-
GEP1415	-	14	15	10,5 / 10	GEP1415-X	-
GEP1416	-	14	16	11,5 / 11	GEP1416-X	-
GEP1420	-	14	20	15,5 / 15	GEP1420-X	-
GEP1609	GEP1609-S	16	09	4,5 / 4	GEP1609-X	GEP1609S-X
GEP1610	GEP1610-S	16	10	5,5 / 5	GEP1610-X	GEP1610S-X
GEP1612	GEP1612-S	16	12	7,5 / 7	GEP1612-X	GEP1612S-X
GEP1615	GEP1615-S	16	15	10,5 / 10	GEP1615-X	GEP1615S-X
GEP1616	GEP1616-S	16	16	11,5 / 11	GEP1616-X	GEP1616S-X
GEP1620	GEP1620-S	16	20	15,5 / 15	GEP1620-X	GEP1620S-X
GEP1625	GEP1625-S	16	25	-	-	-
GEP1809	GEP1809-S	18	09	4,5 / 4	GEP1809-X	GEP1809S-X
GEP1810	GEP1810-S	18	10	5,5 / 5	GEP1810-X	GEP1810S-X
GEP1812	GEP1812-S	18	12	7,5 / 7	GEP1812-X	GEP1812S-X
GEP1815	GEP1815-S	18	15	10,5 / 10	GEP1815-X	GEP1815S-X
GEP1816	GEP1816-S	18	16	11,5 / 11	GEP1816-X	GEP1816S-X
GEP1820	GEP1820-S	18	20	15,5 / 15	GEP1820-X	GEP1820S-X
GEP1825	GEP1825-S	18	25	-	-	-
GEP1830	GEP1830-S	18	30	-	-	-
GEP2009	GEP2009-S	20	09	4,5 / 4	GEP2009-X	GEP2009S-X
GEP2010	GEP2010-S	20	10	5,5 / 5	GEP2010-X	GEP2010S-X
GEP2015	GEP2015-S	20	15	10,5 / 10	GEP2015-X	GEP2015S-X
GEP2020	GEP2020-S	20	20	15,5 / 15	GEP2020-X	GEP2020S-X



- ↳ İki aşamalı kurma sistemi sayesinde kolay ve tek elle kurulma
- ↳ Ekojenik ve atravmatik uç yapısı
- ↳ **22mm\*(17mm örnek alma haznesi) ya da 15mm\*\*(10mm örnek alma haznesi) atış mesafe derinliği**
- ↳ Ergonomik ve hafif sap dizaynı
- ↳ Derinlik işaretli kanül
- ↳ Koaksiyel iğneler isteğe bağlı sağlanabilir
- ↳ **Renk kodu**

# KATRACORE® AUTOMATIC BIOPSY NEEDLE

## KATRACORE® OTOMATİK BİYOPSİ İĞNESİ

- ↳ Easy and one hand operated with two stage arming
- ↳ Echogenic and atraumatic needle tip design
- ↳ 25mm advancement with 20mm notch
- ↳ Ergonomic and light weight design
- ↳ Depth marked canula
- ↳ Coaxial needles are optionally available



Ref. No	Diameter (G)	Length (cm)	Coaxial Needle Length (cm)	With Coaxial Ref. No
GKR1410	14	10	5	GKR1410-X
GKR1415	14	15	10	GKR1415-X
GKR1420	14	20	15	GKR1420-X
GKR1610	16	10	5	GKR1610-X
GKR1615	16	15	10	GKR1615-X
GKR1620	16	20	15	GKR1620-X
GKR1810	18	10	5	GKR1810-X
GKR1815	18	15	10	GKR1815-X
GKR1820	18	20	15	GKR1820-X
GKR1825	18	25		
GKR1830	18	30		
GKR2010	20	10	5	GKR2010-X
GKR2015	20	15	10	GKR2015-X
GKR2020	20	20	15	GKR2020-X

- ↳ İki aşamalı kurma sistemi sayesinde kolay ve tek elle kurulma
- ↳ Ekojenik ve atravmatik uç yapısı
- ↳ 25mm doku içine gömülme mesafesi ve 20mm örnek alma haznesi
- ↳ Ergonomik ve hafif sap dizaynı
- ↳ Derinlik işaretli kanül
- ↳ Koaksiyel iğneler isteğe bağlı sağlanabilir



# VES CUT® AUTOMATIC BIOPSY NEEDLE

## VES CUT® OTOMATİK BİYOPSİ İĞNESİ

- ↳ Choice of two triggers
- ↳ Easy and one hand operated with two stage arming
- ↳ Automatically activated safety mechanism
- ↳ Echogenic and atraumatic needle tip design
- ↳ Ergonomic and light weight design
- ↳ Depth marked canula
- ↳ Coaxial needles are optionally available
- ↳ 25mm advancement with 17mm notch



Ref. No	Diameter (G)	Length (cm)	Coaxial Needle Length (cm)	With Coaxial Ref. No
GVS1410	14	10	5	GVS1410-X
GVS1415	14	15	10	GVS1415-X
GVS1420	14	20	15	GVS1420-X
GVS1610	16	10	5	GVS1610-X
GVS1615	16	15	10	GVS1615-X
GVS1620	16	20	15	GVS1620-X
GVS1810	18	10	5	GVS1810-X
GVS1815	18	15	10	GVS1815-X
GVS1820	18	20	15	GVS1820-X
GVS1825	18	25		
GVS1830	18	30		
GVS2010	20	10	5	GVS2010-X
GVS2015	20	15	10	GVS2015-X
GVS2020	20	20	15	GVS2020-X

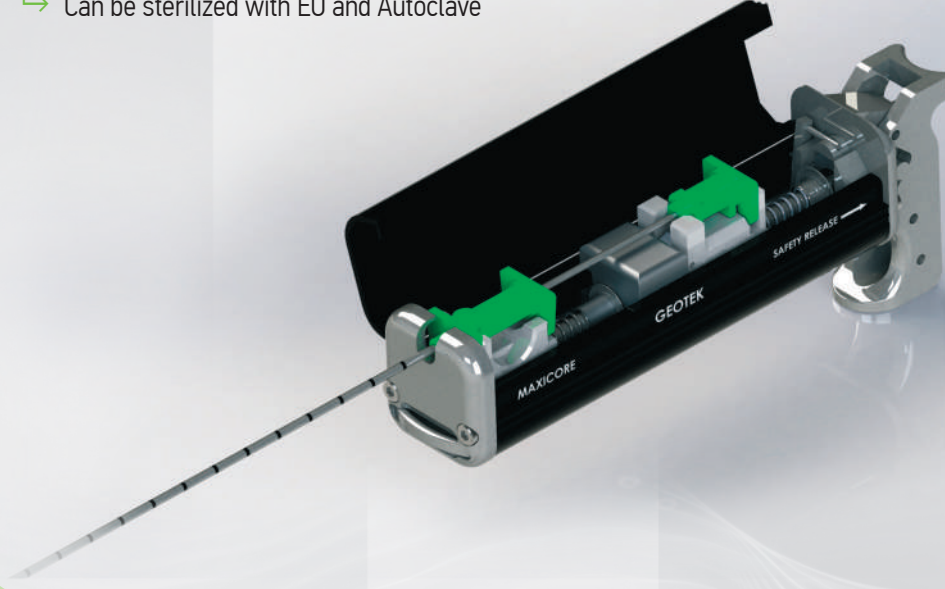
- ↳ İki farklı ateşleme düğmesi
- ↳ İki aşamalı kurma sistemi sayesinde kolay ve tek elle kurulma
- ↳ Otomatik devreye giren güvenlik mekanizması
- ↳ Ekojenik ve atravmatik uç yapısı
- ↳ Ergonomik ve hafif sap dizaynı
- ↳ Derinlik işaretli kanül
- ↳ Koaksiyel iğneler isteğe bağlı sağlanabilir
- ↳ 25mm atım uzunluğu ve 17mm örnek alma haznesi



# MAXICORE® REUSABLE BIOPSY GUN

## MAXICORE® REUSABLE BİYOPSİ TABANCASI

- ↳ Trigger is easily activated
- ↳ Easily positioning and removing
- ↳ Can be sterilized with EO and Autoclave



Ref. No	Description
GBG01	Maxicore Reusable Biopsy Gun

- ↳ Pratik kurulma mekanizması
- ↳ İğne yerleştirme ve sökme kolaylığı
- ↳ EO ve otoklav sterilizasyon yöntemine uygundur

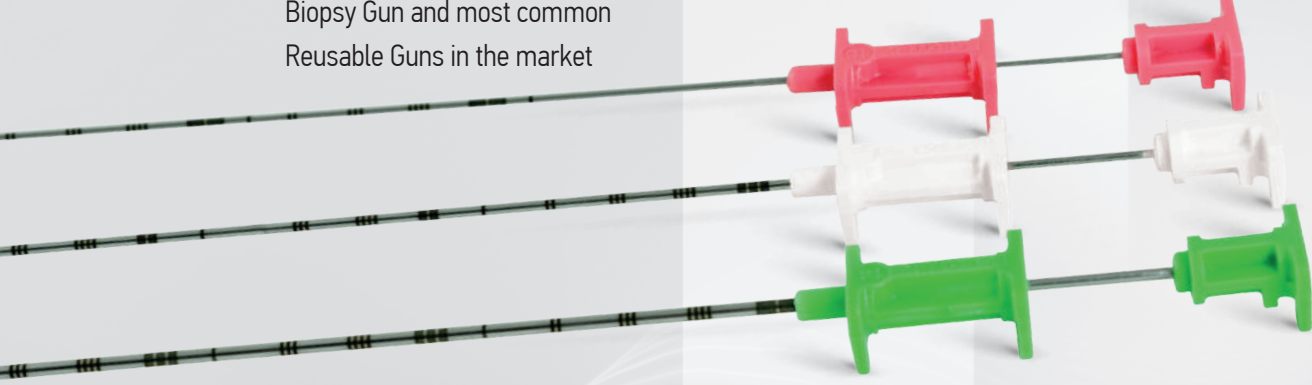




# MAXICORE® BIOPSY GUN NEEDLE

## MAXICORE® BİYOPSİ TABANCA İĞNESİ

- ↳ Echogenic needle tip
- ↳ 17mm sample notch
- ↳ Depth marked canula
- ↳ Color code
- ↳ Compatible with Maxicore Reusable Biopsy Gun and most common Reusable Guns in the market



- ↳ Ekojenik uç
- ↳ 17mm örnek alma haznesi
- ↳ Derinlik işaretli kanül
- ↳ Renk kodu
- ↳ Maxicore Reusable Biyopsi Tabancası ve piyasada yaygın olarak kullanılan birçok Reusable Biyopsi Tabancası ile uyumludur

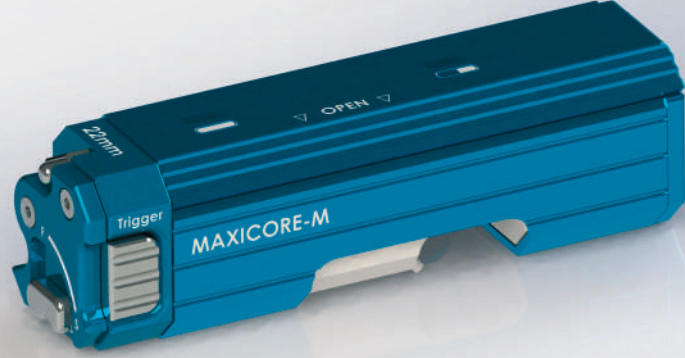


Ref. No	Diameter (G)	Length (cm)
GPN1410	14	10
GPN1412	14	12
GPN1415	14	15
GPN1420	14	20
GPN1610	16	10
GPN1615	16	15
GPN1620	16	20
GPN1810	18	10
GPN1815	18	15
GPN1820	18	20
GPN1825	18	25
GPN1830	18	30

# MAXICORE-M® REUSABLE BIOPSY GUN

## MAXICORE-M® REUSABLE BİYOPSİ TABANCASI

- ↳ Lightweight body
- ↳ Adjustable sampling option 15/22 mm
- ↳ Safety mechanism to prevent accidental firing
- ↳ Can be sterilized with EO and Autoclave



Ref. No	Description
GBG-M	Maxicore-M Reusable Biopsy Gun

- ↳ Hafif gövde
- ↳ 15/22mm isteğe göre değişebilen örnek alma haznesi
- ↳ Kazara ateşlemeye karşı güvenlik mekanizması
- ↳ EO ve otoklav sterilizasyon yöntemine uygundur



# MAXICORE-M® BIOPSY GUN NEEDLE

## MAXICORE-M® BİYOPSİ TABANCA İĞNESİ

- ↳ Echogenic needle tip
- ↳ 17 mm sample notch
- ↳ Depth marked canula
- ↳ Color code
- ↳ Compatible with Maxicore-M® Reusable Biopsy Gun and Bard Magnum® Reusable Gun (\*)

(\*) Bard Magnum® is a Trade Mark of Bard Inc.



- ↳ Ekojenik uç
- ↳ 17mm örnek alma haznesi
- ↳ Derinlik işaretli kanül
- ↳ Renk kodu
- ↳ Maxicore-M™ ve Bard Magnum™ Reusable Biyopsi Tabancası ile uyumludur

Bard Magnum® is a Trade Mark of Bard Inc.

Ref. No	Diameter (G)	Length (cm)
GPN1410-M	14	10
GPN1412-M	14	12
GPN1415-M	14	15
GPN1420-M	14	20
GPN1610-M	16	10
GPN1615-M	16	15
GPN1620-M	16	20
GPN1810-M	18	10
GPN1815-M	18	15
GPN1820-M	18	20
GPN1825-M	18	25
GPN1830-M	18	30



# MAXICORE-U REUSABLE BIOPSY GUN

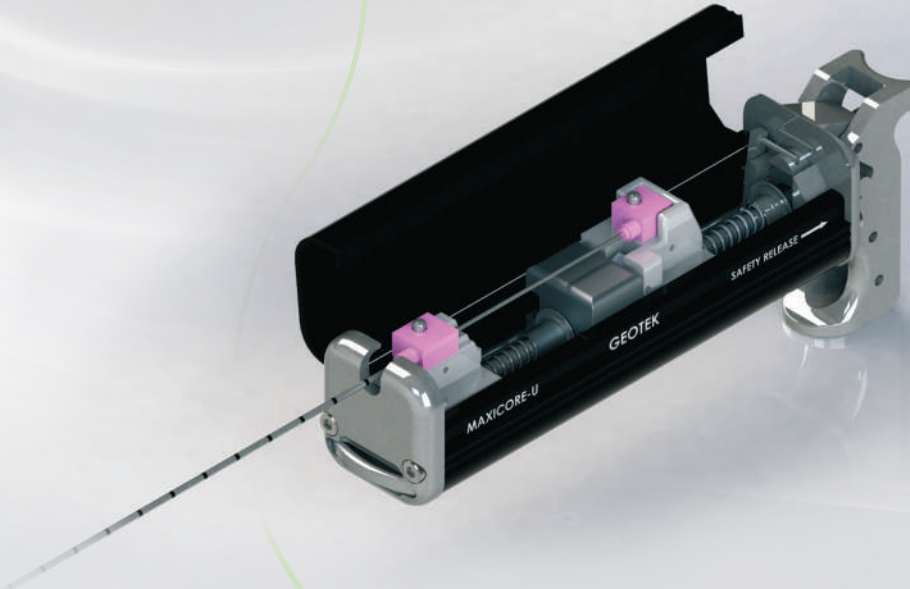
## MAXICORE-U REUSABLE BİYOPSİ TABANCASI

- ↳ Lightweight body
- ↳ Safety mechanism to prevent accidental firing
- ↳ Two triggers options
- ↳ Can be sterilized with E0 and Autoclave



Ref. No	Description
GBG-U	Maxicore-U Reusable Biopsy Gun

- ↳ Hafif gövde
- ↳ Kazara ateşlemeye karşı güvenlik mekanizması
- ↳ Ön ve arka olmak üzere 2 ateşleme tuşu
- ↳ E0 ve otoklav sterilizasyon yöntemine uygundur



# MAXICORE-U® BIOPSY GUN NEEDLE

## MAXICORE-U® BİYOPSİ TABANCA İĞNESİ

- ↳ Echogenic needle tip
- ↳ 17 mm sample notch
- ↳ Depth marked canula
- ↳ Color code
- ↳ Compatible with Maxicore-U® Reusable Biopsy Gun and Pro-Mag Ultra® Reusable Gun (\*)

(\*) Pro-Mag Ultra is a Trade Mark of Angiotech Inc.

- ↳ Ekojenik uç
- ↳ 17mm örnek alma haznesi
- ↳ Derinlik işaretli kanül
- ↳ Renk kodu
- ↳ Maxicore-U™ Reusable Biyopsi Tabancası ve Pro-Mag Ultra™ Reusable Biyopsi Tabancası ile uyumludur

(\*) Pro-Mag Ultra is a Trade Mark of Angiotech Inc.

Ref. No	Diameter (G)	Length (cm)
GPN1410-U	14	10
GPN1412-U	14	12
GPN1415-U	14	15
GPN1420-U	14	20
GPN1610-U	16	10
GPN1615-U	16	15
GPN1620-U	16	20
GPN1810-U	18	10
GPN1815-U	18	15
GPN1820-U	18	20
GPN1825-U	18	25
GPN1830-U	18	30



# SEMI-AUTOMATIC BIOPSY NEEDLE

## YARI OTOMATİK BİYOPSİ İĞNESİ

- ↳ Echogenic and atraumatic needle tip design
- ↳ Light weight handle
- ↳ Adjustable sample notch: 10mm-20mm
- ↳ Depth marked canula
- ↳ Color code
- ↳ Co-axial needles are optionally available



- ↳ Ekojenik ve atravmatik uç yapısı
- ↳ Hafif sap dizaynı
- ↳ Ayarlanabilir örnek alma haznesi: 10mm ve 20mm
- ↳ Derinlik işaretli kanül
- ↳ Renk kodu
- ↳ Koaksiyel iğneler isteğe bağlı sağlanabilir

Ref. No	Diameter (G)	Length (cm)	Coaxial Needle Length (cm)	With Coaxial Ref. No
GSN1410	14	10	5,5	GSN1410-X
GSN1415	14	15	10,5	GSN1415-X
GSN1420	14	20	15,5	GSN1420-X
GSN1610	16	10	5,5	GSN1610-X
GSN1615	16	15	10,5	GSN1615-X
GSN1620	16	20	15,5	GSN1620-X
GSN1810	18	10	5,5	GSN1810-X
GSN1815	18	15	10,5	GSN1815-X
GSN1820	18	20	15,5	GSN1820-X
GSN1825	18	25		
GSN2010	20	10	5,5	GSN2010-X
GSN2015	20	15	10,5	GSN2015-X
GSN2020	20	20	15,5	GSN2020-X

# TUMOR MARKING NEEDLE

## TÜMÖR İŞARETLEME İĞNESİ

- ↳ Sterile placement needle with preloaded 99.99% Pure Gold or PEEK® marker
- ↳ Accurate target visualization in tumors/organs during external radiation therapy
- ↳ Excellent visibility of markers under fluoroscopy, X-ray, CT, MRI and ultrasound
- ↳ The ergonomic handle design with safety lock provides secure positioning of markers
- ↳ Knurled surface of the markers prevent migration



- ↳ Distal ucuna altın ve PEEK® işaretleyicisi yüklenmiş olan steril iğne
- ↳ Radyasyon tedavilerinde tümör veya organlarda kesin hedefi görüntüleme
- ↳ Floroskopi, X-ray, CT, MRI ve ultrason altında mükemmel marker görünümü
- ↳ Emniyet kilitli ergonomik sap tasarımı sayesinde en iyi şekilde marker konumlandırılması sağlanır

### PEEK MARKER

Ref. No	Needle (G x cm)	PEEK® Marker (mm x mm)	Marker Shape
GTP1410	14 x 10	1,5 x 4	∞
GTP1412	14 x 12	1,5 x 4	∞
GTP1415	14 x 15	1,5 x 4	∞
GTP1610	16 x 10	1,2 x 4	∞
GTP1615	16 x 15	1,2 x 4	∞
GTP1810	18 x 10	1 x 4	∞
GTP1815	18 x 15	1 x 4	∞
GTP1820	18 x 20	1 x 4	∞
GTP1825	18 x 25	1 x 4	∞
GTP1910	19 x 10	1 x 4	∞
GTP1915	19 x 15	0,8 x 4	∞
GTP1920	19 x 20	0,8 x 4	∞
GTP1925	19 x 25	0,8 x 4	∞

### GOLD MARKER

Ref. No	Size (G x cm)	Marker Size (mm x mm)	Marker Shape
GTM1810	18 x 10	1 x 4	∞
GTM1815	18 x 15	1 x 4	∞
GTM1820	18 x 20	1 x 4	∞
GTM1825	18 x 25	1 x 4	∞
GTM1910	19 x 10	0,8 x 4	∞
GTM1915	19 x 15	0,8 x 4	∞
GTM1920	19 x 20	0,8 x 4	∞
GTM1925	19 x 25	0,8 x 4	∞

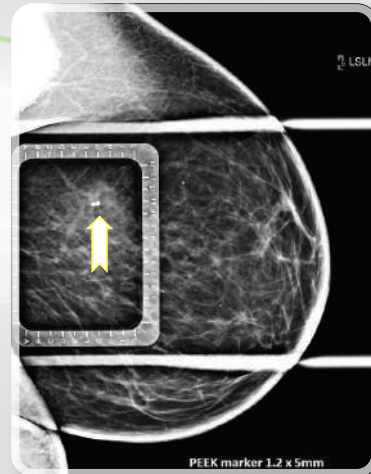


Fig-1 Mammography capture of PEEK marker 1.2mmx5mm

# BREAST LOCALIZATION NEEDLE

## MEME İŞARETLEME İĞNESİ

- ↳ Ultra-sharp and atraumatic needle tip design
  - ↳ \*Marking wire with single hook or double hook
  - ↳ Depth markers
- 
- ↳ Ultra-keskin ve atravmatik uç dizaynı
  - ↳ Tek veya çift kancalı işaretleme teli
  - ↳ Derinlik işaretli kanül

Single Hook Ref. No	Double Hook Ref. No	Diameter (G)	Length (cm)
GBL2005	GBLZ2005	20	5
GBL2007	GBLZ2007	20	7
GBL2010	GBLZ2010	20	10
GBL2012	GBLZ2012	20	12
GBL2015	GBLZ2015	20	15

# PERCUTANEOUS ACCESS NEEDLE

## PERKÜTAN GİRİŞ İĞNESİ

- ↳ Echogenic needle tip
- ↳ Ultra-thin cannula accepts 0.038" guide wire
- ↳ Depth markers
- ↳ Color code

- ↳ Ekojenik uç
- ↳ Ultra ince kanül 0.038" kılavuz tel geçişine imkan verir
- ↳ Derinlik işaretli kanül
- ↳ Renk kodu



Ref. No	Diameter (G)	Length (cm)
GPA1810	18	10
GPA1815	18	15
GPA1820	18	20
GPA1825	18	25



# DOUBLE LUMEN OOCYTE ASPIRATION NEEDLE

## ÇİFT LÜMENLİ YUMURTA TOPLAMA İĞNESİ

- ↳ 16G Double Lumen Needle maximize the quality of oocytes
- ↳ Echo marked tip gives extreme ultrasound definition
- ↳ Sharp needle tip ensures minimum trauma
- ↳ Silicone tap fits test tubes securely

Ref. No	Needle (G x cm)	Aspiration Line (cm)	Suction Line (cm)	Flushing Line (cm)
GOA1632	16 x 32	100	20	100
GOA1635	16 x 35	100	20	100

- ↳ 16G Çift Lümen İğne toplu alınan yumurta kalitesini artırır
- ↳ Ekolojik iğne ucu ultrason altında mükemmel görünüm sağlar
- ↳ Keskin iğne ucu travmaları minimuma indirir
- ↳ Silikon stoper, test tüplerine güvenli şekilde oturur



# SINGLE LUMEN OOCYTE ASPIRATION NEEDLE

## TEK LÜMENLİ YUMURTA TOPLAMA İĞNESİ

- ↳ Unique grip design with bevel marker ensures effective control and comfort
- ↳ 17G Single Lumen Needle maximize the quality of oocytes retrieved along with minimized operating time
- ↳ Echo marked tip gives extreme ultrasound definition
- ↳ Sharp needle tip ensures minimum trauma
- ↳ Silicone tap fits test tubes securely
- ↳ With 3 way stopcock for flushing line is also available



- ↳ Özel sapı efektif kontrol ve rahatlık sağlar
- ↳ 17G ölçülerinde tek lümen ile toplu alınan yumurta kalitesini artırırken, operasyon süresini kısaltır
- ↳ Ekojenik iğne ucu ultrason altında mükemmel görünüm sağlar
- ↳ Keskin iğne ucu travmaları minimuma indirir
- ↳ Silikon stopper test tüplerine güvenli şekilde oturur
- ↳ Folikülü yıkamak için 3 yollu musluk ile birlikte ekstra line

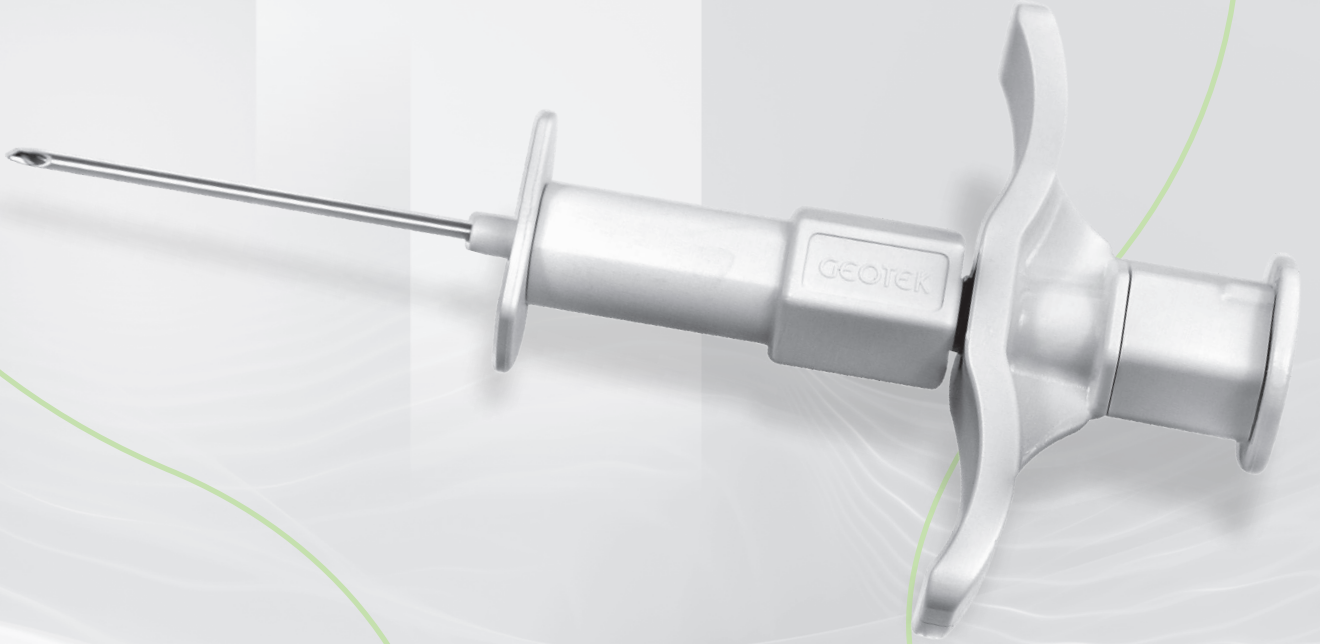
Ref. No	Needle (G x cm)	Aspiration (cm)	Suction Tube (cm)	Flushing Tube w/stopcock
GOA1730	17 x 30	93.5	62.5	-
GOA1730-F	17 x 30	93.5	62.5	+
GOA1735	17 x 35	93.5	62.5	-
GOA1735-F	17 x 35	93.5	62.5	+

# BONE MARROW ASPIRATION NEEDLE

## KEMİK İLİĞİ ASPİRASYON İĞNESİ

- ↳ Atraumatic ultra sharp needle tip design
- ↳ Adjustable needle length
- ↳ Depth marked scala
- ↳ Light weight and ergonomic handle
- ↳ Easy to use with excellent comfort
- ↳ Color code

- ↳ Atravmatik ultra keskin uç dizaynı
- ↳ Ayarlanabilir iğne boyu
- ↳ Ölçeklendirilmiş derinlik ayarı
- ↳ Hafif ve ergonomik sap
- ↳ Konforlu ve kolay uygulama
- ↳ Renk kodu



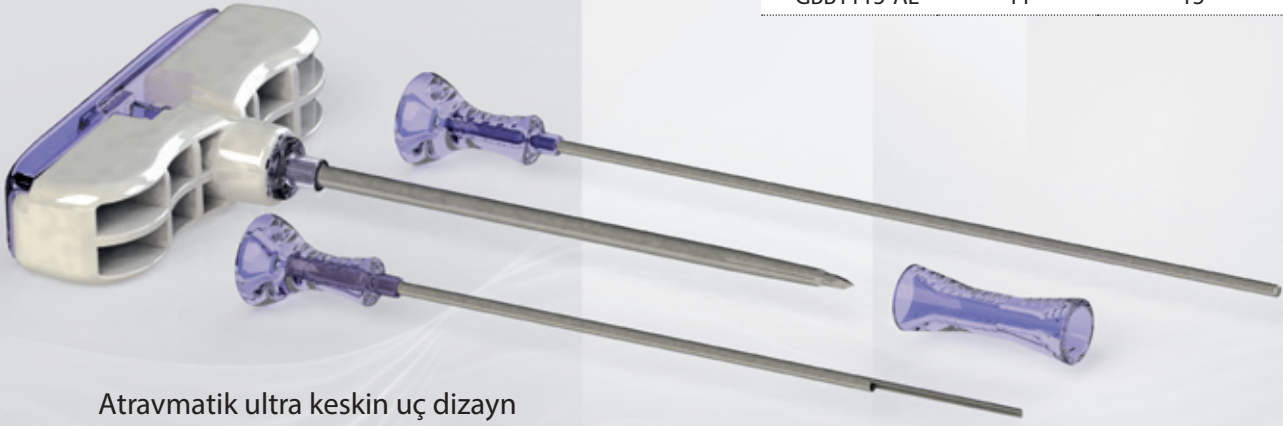
Ref. No	Diameter (G)	Length (cm)
GBA1450	14	5
GBA1470	14	7
GBA1550	15	5
GBA1570	15	7
GBA1650	16	5
GBA1670	16	7
GBA1850	18	5

# BONE MARROW BIOPSY NEEDLE KEMİK İLİĞİ BİYOPSİ İĞNESİ

Atraumatic ultra sharp needle tip design  
Cutting Cannula helps to easier and faster sampling  
Light weight and ergonomic handle  
Easy to use with excellent comfort

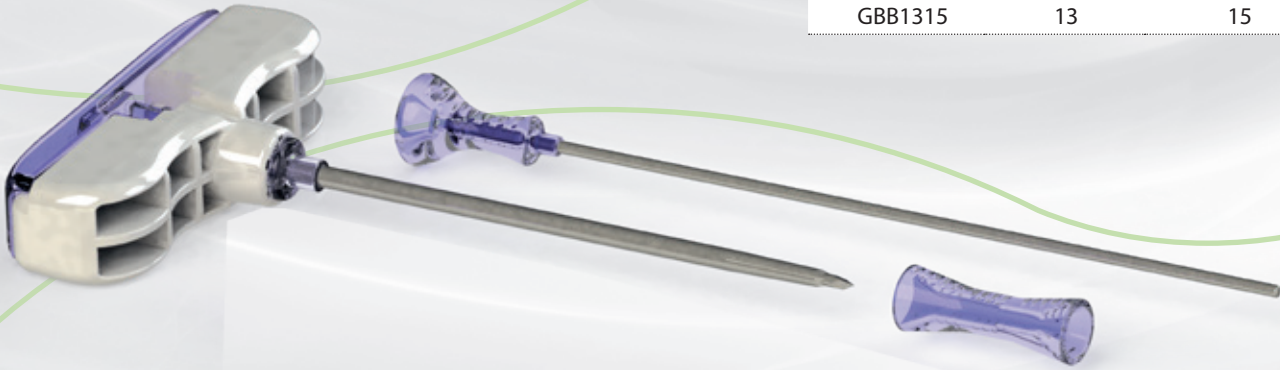
## w / Cutting Canula

Ref. No	Diameter (G)	Length (cm)
GBB0810-AL	8	10
GBB0815-AL	8	15
GBB1110-AL	11	10
GBB1115-AL	11	15



Atravmatik ultra keskin uç dizayn  
Hafif ve ergonomik sap  
Kolay ve hızlı numune alımı sağlayan kesme kanülü  
Konforlu ve kolay uygulama

Ref. No	Diameter (G)	Length (cm)
GBB0810	8	10
GBB0815	8	15
GBB0910	9	10
GBB0915	9	15
GBB1110	11	10
GBB1115	11	15
GBB1310	13	10
GBB1315	13	15





# COAXIAL NEEDLE

## KOAKSİYEL İĞNESİ

- ↳ Light weight and extra thin wall tubing
- ↳ Trocar tip for straight entry
- ↳ Color code for identifying the accurate diameter
- ↳ Accurate depth placement with centimeter marks



- ↳ Hafif ve ekstra ince et kalınlığı
- ↳ Trokar iğne ucu ile düzgün giriş
- ↳ Renk kodu sayesinde doğru ölçü tespiti
- ↳ Santimetre ölççekleri sayesinde giriş derinliğinin kontrol edilebilmesi

Ref. No	Diameter (G)	Length (cm)
GCX1305	13	5
GCX1310	13	10
GCX1315	13	15
GCX1505	15	5
GCX1510	15	10
GCX1515	15	15
GCX1705	17	5
GCX1710	17	10
GCX1715	17	15
GCX1905	19	5
GCX1910	19	10
GCX1915	19	15



# CHIBA BIOPSY NEEDLE

## CHIBA BIYOPSİ İĞNESİ

- ↳ Marking (cm)
- ↳ Color coded
- ↳ Echogenic tip

- ↳ Santimetre ölçęđi
- ↳ Renk kodu
- ↳ Ekojenik uç



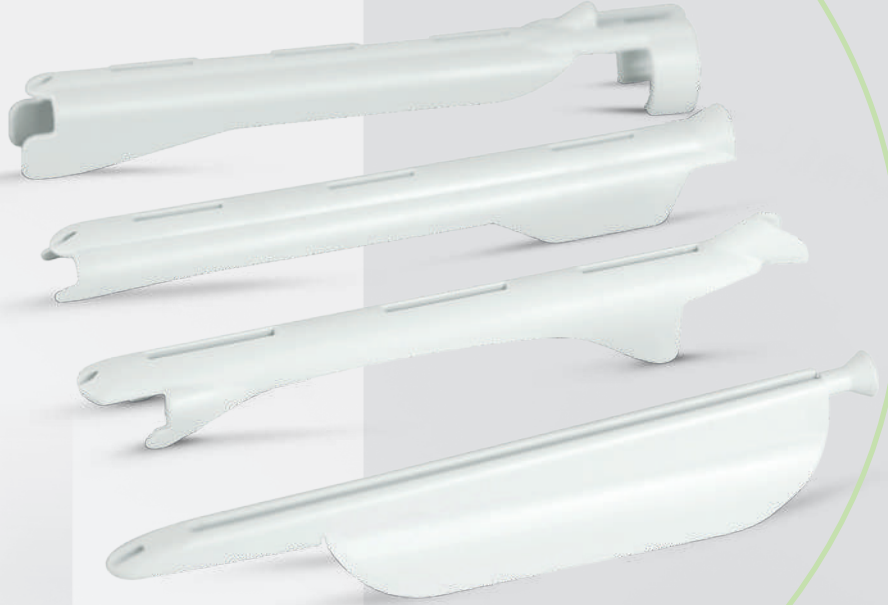
Ref. No	Diameter (G)	Length (cm)
GCB1810	18	10
GCB1815	18	15
GCB1820	18	20
GCB2010	20	10
GCB2015	20	15
GCB2020	20	20
GCB2025	20	25
GCB2210	22	10
GCB2215	22	15
GCB2220	22	20
GCB2225	22	25





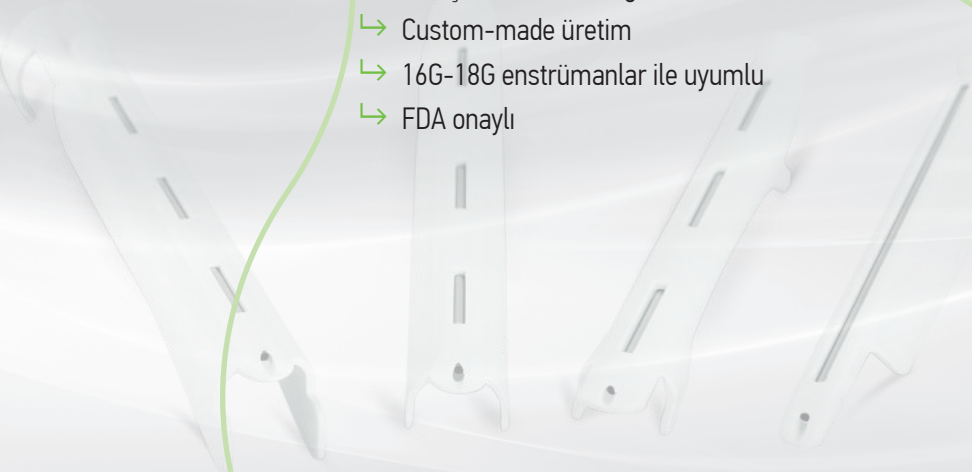
# DISPOSABLE NEEDLE GUIDES

## TEK KULLANIMLIK BİYOPSİ İĞNE KILAVUZU



- ↳ Used in ultrasound guided procedures like as transrectal prostate biopsies, transvaginal biopsies and transvaginal oocyte retrieval
- ↳ The disposable design reduces the risks of cross contamination and infection
- ↳ All guides accept 16G-18G sizes instruments
- ↳ Compatible with well-known endocavity ultrasound probes in the market
- ↳ FDA Approved

- ↳ US eşliğinde yapılan transvektal prostat ve transvajinal biyopsiler ile transvajinal yumurta toplama prosedürleri
- ↳ Tek kullanımlık ve steril
- ↳ Düşük çapraz bulaşma riski
- ↳ Hızlı ve pratik işlem imkanı
- ↳ Geniş ve esnek ürün gamı
- ↳ Custom-made üretim
- ↳ 16G-18G enstrümanlar ile uyumlu
- ↳ FDA onaylı

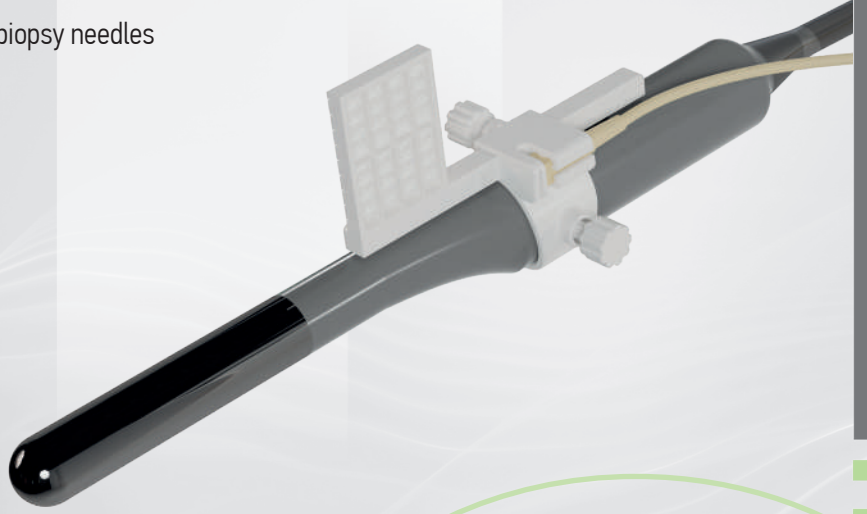


# TRANSPERINEAL BIOPSY NEEDLE GUIDE

## TEK KULLANIMLIK TRANSPERİNEAL İĞNE KILAVUZU

Transperineal biopsy needle guide is a disposable medical product used for guidance of biopsy needles together with Transrectal USG probes.

- ↳ US-guided transperineal prostate procedures and biopsies
- ↳ Sterile & Disposable
- ↳ The disposable design reduces the risks of infection & cross contamination
- ↳ Accepts 15G/16G/17G/18G size biopsy needles



Transperineal biyopsi iğne kılavuzu, Transrektal ultrason problemleri ile birlikte biyopsi iğnelere kılavuzluk etmek için kullanılan tek kullanımlık bir tıbbi üründür.

- ↳ Ultrason eşliğinde transrektal prostat prosedürleri ve biyopsileri için kullanılır
- ↳ Steril ve tek kullanımlıktır
- ↳ Tek kullanımlık tasarım enfeksiyon ve çapraz kontaminasyon risklerini azaltır
- ↳ 15G-16G-17G-18G seçenekleri mevcuttur

Ref. Code	Size (1)	Size (2)	Compatible Usg Probe
GTK150	15/16G	17/18G	BK 8648, BK 8848, BK 9048, BK E14C4b
GTK151	15/16G	17/18G	BK 8818, BK E14C4t

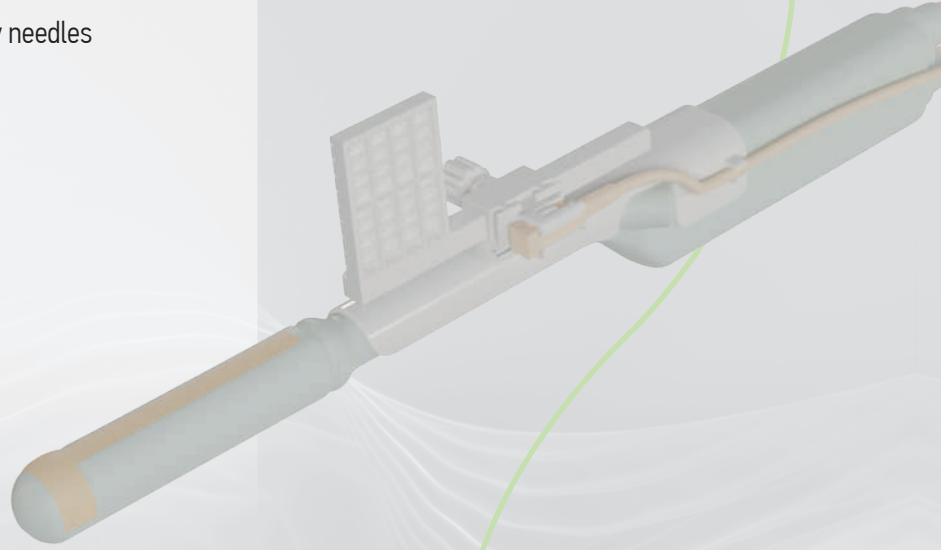
\* Please specify the size at you ordering. (Size1 or Size2)

# TRANSPERINEAL BIOPSY NEEDLE GUIDE

## TEK KULLANIMLIK TRANSPERİNEAL İĞNE KILAVUZU

Transperineal biopsy needle guide is a disposable medical product used for guidance of biopsy needles together with Transrectal USG probes.

- ↳ US-guided transperineal prostate procedures and biopsies
- ↳ Sterile & Disposable
- ↳ The disposable design reduces the risks of infection & cross contamination
- ↳ Accepts 15G/16G/17G/18G size biopsy needles



Transperineal biyopsi iğne kılavuzu, Transrektal ultrason problemleri ile birlikte biyopsi iğnelere kılavuzluk etmek için kullanılan tek kullanımlık bir tıbbi üründür.

- ↳ Ultrason eşliğinde transrektal prostat prosedürleri ve biyopsileri için kullanılır
- ↳ Steril ve tek kullanımlıktır
- ↳ Tek kullanımlık tasarım enfeksiyon ve çapraz kontaminasyon risklerini azaltır
- ↳ 15G-16G-17G-18G seçenekleri mevcuttur

Ref. Code	Size (1)	Size (2)	Compatible Usg Probe
GTK153	15/16G	17/18G	Hitachi C41L47RP, U533

\* Please specify the size at you ordering. (Size1 or Size2)

# TRUS BIOPSY KIT

## TRUS BİYOPSİ KİT

- ↳ Full Set for Transrectal Ultrasound guided prostate biopsy procedures
- ↳ Reduced risk of cross-contamination with sterile and single use kit
- ↳ Easier and comfortable procedure with all necessary items in one kit
- ↳ Offered in a variety of kit configuration
- ↳ Custom-made kit configuration is upon your request



- ↳ Prostat Biyopsi prosedürü için gerekli tüm elemanları içerir;  
Core Biyopsi İğnesi,  
Chiba İğne,  
Biyopsi İğne Kılavuzu,  
Örnek Tüpleri,  
Tek Kullanımlık Örtü ve Eldiven,  
Hasta Kayıt Etiketleri
- ↳ Çapraz bulaşma riskini azaltır
- ↳ İşlem için gerekli tüm kalemelerin tek bir sette olması ile hızlı ve konforlu işlem sağlanır
- ↳ Müşteriye özel değişebilen kit içeriği

Trus Kit Ref. No.	Needle Guide (1 unit)	Reusable Biopsy Gun Needle (1 unit)	Disposable Biopsy Device (1 unit)	Chiba Needle (1 unit)	Sample Box (12 bottles)	Probe Cover (2 units)
		16Gx20cm	16Gx20cm	18Gx20cm		
		18Gx20cm 18Gx25cm 18Gx30cm	18Gx20cm 18Gx25cm 18Gx30cm			
GTR-A	+	+		+	+	+
GTR-B	+		+	+	+	+
GTR-C	+	+		+		+
GTR-D	+		+	+		+
GTR-E	+				+	+
GTR-F				+	+	+
GTR-G			+	+	+	+

- \* Parts included in kit are shown as "+" on above lines.
- \* Please select your kit from the "Ref. No. Column" according to your requirement and notice your needle sizes for biopsy and chiba additionally.
- \* Please indicate model of Needle Guide and/or USG Transducer Model No. when ordering Trus Biopsy Kit.



# NOTES



A series of horizontal lines for writing notes, starting from the top of the page and extending down to the bottom. The lines are evenly spaced and cover most of the page width.



# GEOTEK®

Healthcare Products

**Head Office:** İvedik OSB Ağaç-Metal San. Sit.  
1436. Sokak No: 12 06370 Ostim - Ankara / TÜRKİYE  
Tel: +90 (312) 395 98 52 • Fax: +90 (312) 395 98 53

**Factory:** Eskişehir Yolu 42. Km ASO 2 ALCI OSB  
2014. cadde No: 11 06909 Sincan - Ankara / TÜRKİYE  
Tel: +90 (312) 514 64 04

e-mail: [info@geotekmedical.com](mailto:info@geotekmedical.com)

[www.geotekmedical.com](http://www.geotekmedical.com)

**USA Office:** 333 5th Avenue 5th Floor, New York, NY 10016, USA

Tel: +1 (908) 699-0662 • [info@geotekmedicalusa.com](mailto:info@geotekmedicalusa.com)

[www.geotekmedicalusa.com](http://www.geotekmedicalusa.com)



GEOTEK MEDICAL



GEOTEK MEDICAL USA LLC.