

DISPOSABLE NEEDLE GUIDES

COMPATIBLE USG PROBES	REFERENCE CODE	NEEDLE GUIDE
HITACHI EUP-V33, EUP-V33W, EUP-CC331, EUP-CC531, EUP-V53W, EUP-V12	GTK01	
BK 8808 8818, 8808e	GTK02	
	GTK13	
TOSHIBA PVF-620ST, PVL-625RT, PVM-620ST, PVG-600S, PVT-661VT, PVM-651VT, PVQ-641V, PVG-630V, PVN-661VT PVM-740-RT PVT-770-RT SSA-790A (AplioXG) PVT-781VT, PVU-781VT, PVT-781VTE, PVU-781VTE PVU-770-ST (11C4)	GTK03	
	GTK04	
	GTK07	
	GTK08	
	GTK130	
ESAOTE EC123, EC1123, SE3123 E8-5R10	GTK08	
	GTK11	
ALOKA UST-670P, UST-675P, UST-676P UST-984-5, UST-969P-5 UST-9118, UST-9124	GTK06	
	GTK100	
	GTK101	
HITACHI/ALOKA C41V1, EUP-V73W	GTK18	
SHIMADZU UBR10R-65U	GTK05	
PHILIPS BP10-5ec, C9-4ec C8-4V, C9-3V, C9-4V (ClearVue650 & 350) C10-4ec	GTK08-R	
	GTK110	
	GTK16	

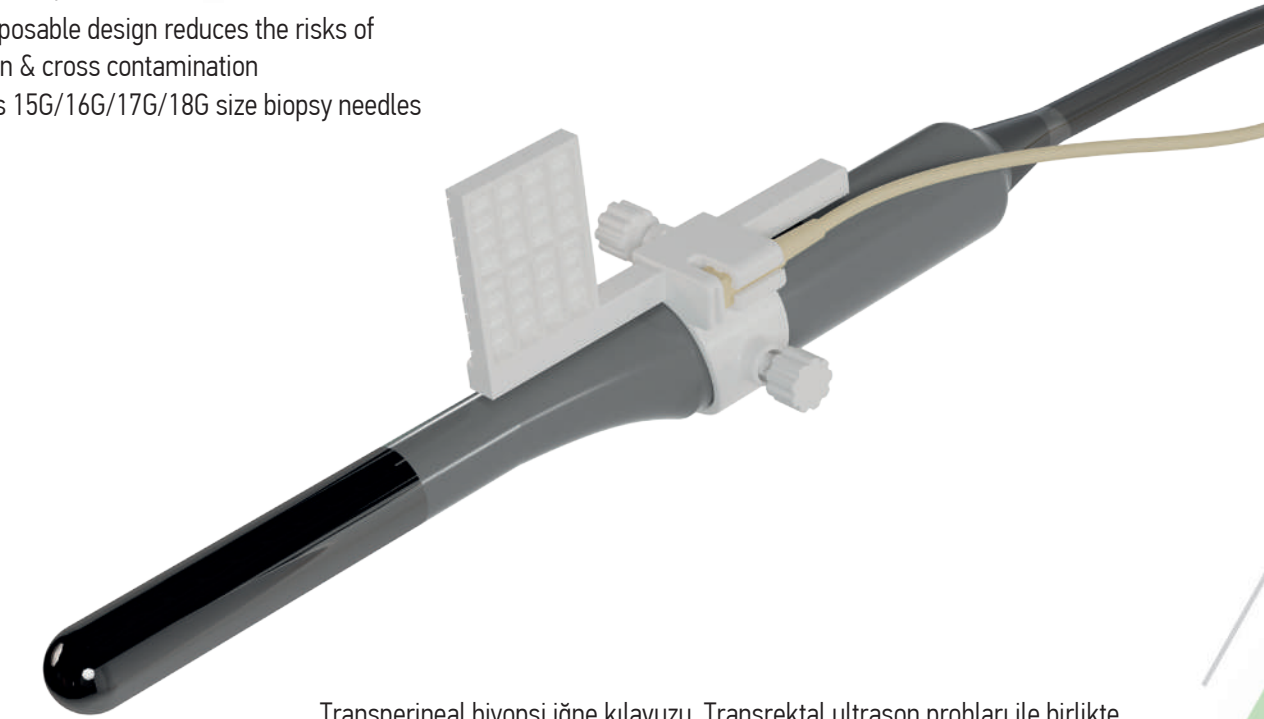
* Please contact us for your specific requirements or if you can not find the probe in the list.

TRANSPERINEAL BIOPSY NEEDLE GUIDE

COMPATIBLE USG PROBES	REFERENCE CODE	NEEDLE GUIDE
IC5-9RS	GTK08	
E8CS, IC5-9-D, E72, E8C, IC5-9H, E721, 6.5MHz, MTZ, E8C-RS	GTK09	
GE BE9C, BE9CS E7C-RC RIC-9W-RS (Voluson S), RIC6-12-D, RIC5-9-D, RIC5-9H IC9-RS (Voluson S10)	GTK10	
	GTK11-R	
	GTK140	
	GTK141	
ALPINION E3-10 EV3-10, EV3-10H	GTK08	
	GTK09-RS	
SIEMENS BE9-4, EC9-4 (Acuson X-150) EC7, EC10C5, 6.5EC10, EC9-4 (Sonoline G20) EC9-4W (Acuson S3000), MC9-4 Endo-V II (Sonoline G50) Endo V EC9-4 (Sonoline G40,, Acuson X300), EV9-4 (Sonoline G40, Acuson X300)	GTK08	
	GTK11	
	GTK12	
	GTK120	
	GTK121	
SAMSUNG MEDISON EC4-9IS, EC4-9ES, ER4-9ES EV4-9/10ED, ER4-9/10ED, EVN4-9	GTK11	
	GTK15	
MINDRAY V10-4B, V10-4, CB10-4, 6CV1s, 65CV1, 65EC10EA	GTK11	

Transperineal biopsy needle guide is a disposable medical product used for guidance of biopsy needles together with Transrectal USG probes.

- ↳ US-guided transperineal prostate procedures and biopsies
- ↳ Sterile & Disposable
- ↳ The disposable design reduces the risks of infection & cross contamination
- ↳ Accepts 15G/16G/17G/18G size biopsy needles



Transperineal biyopsi iğne kılavuzu, Transrektal ultrason problemleri ile birlikte biyopsi iğnelere kılavuzluk etmek için kullanılan tek kullanımlık bir tıbbi üründür.

- ↳ Ultrason eşliğinde transrektal prostat prosedürleri ve biyopsileri için kullanılır
- ↳ Steril ve tek kullanımlıktır
- ↳ Tek kullanımlık tasarım enfeksiyon ve çapraz kontaminasyon risklerini azaltır
- ↳ 15G-16G-17G-18G seçenekleri mevcuttur

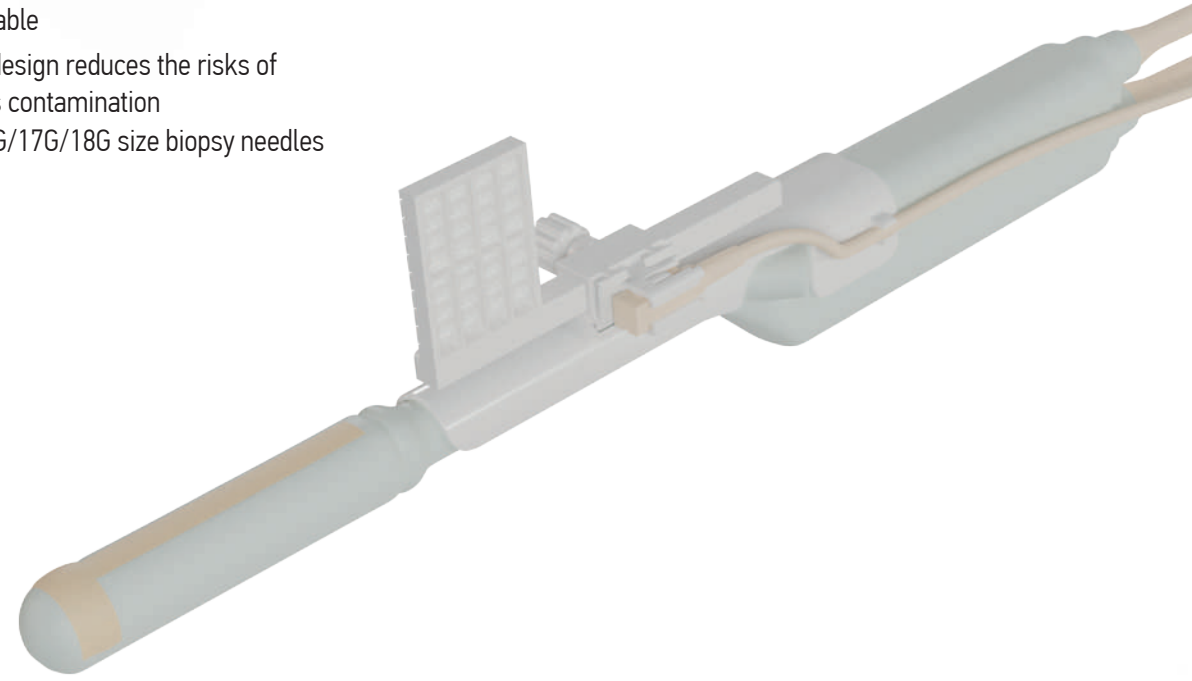
Ref. Code	Size (1)	Size (2)	Compatible Usg Probe
GTK150	15/16G	17/18G	BK 8648, BK 8848, BK 9048, BK E14C4b
GTK151	15/16G	17/18G	BK 8818, BK E14C4t

* Please specify the size at you ordering. (Size1 or Size2)

TRANSPERINEAL BIOPSY NEEDLE GUIDE

Transperineal biopsy needle guide is a disposable medical product used for guidance of biopsy needles together with Transrectal USG probes.

- ↳ US-guided transperineal prostate procedures and biopsies
- ↳ Sterile & Disposable
- ↳ The disposable design reduces the risks of infection & cross contamination
- ↳ Accepts 15G/16G/17G/18G size biopsy needles



Transperineal biyopsi iğne kılavuzu, Transrektal ultrason problemleri ile birlikte biyopsi iğnelere kılavuzluk etmek için kullanılan tek kullanımlık bir tıbbi üründür.

- ↳ Ultrason eşliğinde transrektal prostat prosedürleri ve biyopsileri için kullanılır
- ↳ Steril ve tek kullanımlıktır
- ↳ Tek kullanımlık tasarım enfeksiyon ve çapraz kontaminasyon risklerini azaltır
- ↳ 15G-16G-17G-18G seçenekleri mevcuttur

Ref. Code	Size (1)	Size (2)	Compatible Usg Probe
GTK153	15/16G	17/18G	Hitachi C41L47RP, U533

* Please specify the size at you ordering. (Size1 or Size2)



Head Office: İvedik OSB Ağaç-Metal San. Sit.
1436. Sokak No: 12 06370 Ostim - Ankara / TÜRKİYE
Tel: +90 (312) 395 98 52 • Fax: +90 (312) 395 98 53

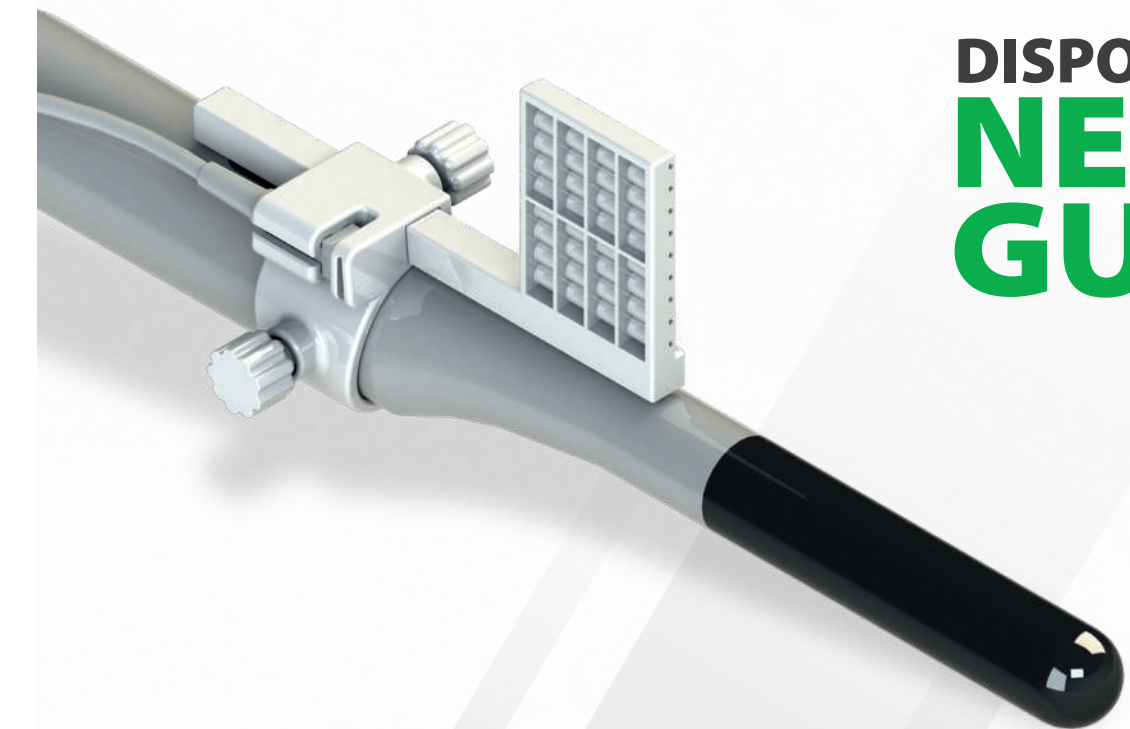
Factory: Eskişehir Yolu 42. Km ASO 2 ALCI OSB
2014. cadde No: 11 06909 Sincan - Ankara / TÜRKİYE
Tel: +90 (312) 514 64 04

e-mail: info@geotekmedical.com
www.geotekmedical.com

USA Office: 333 5th Avenue 5th Floor, New York, NY 10016, USA
Tel: +1 (908) 699-0662 • info@geotekmedicalusa.com
www.geotekmedicalusa.com



Rev. 03 - 31.10.2023



**DISPOSABLE
NEEDLE
GUIDES**